



# KALANAH

RIVERSIDE RESORT



WEDDING PACKAGES





Celebrate your wedding at our riverside sanctuary, where timeless elegance meets exceptional service. Our luxurious venues, including elegant banquet halls and picturesque outdoor spaces, offer enchanting views of the Chao Phraya River, capturing the magical ambiance of the waterfront. Surrounded by serene gardens, we provide the perfect backdrop for your special day. As a pet-friendly venue, we welcome you to include your beloved furry friends in your celebration. Our dedicated team ensures that every detail is meticulously planned and flawlessly executed, creating an unforgettable experience for you and your guests. Whether you envision an intimate ceremony or a grand celebration, we are here to make your wedding a cherished and memorable occasion."





# WEDDING VENUES

## YEN NER RUN

370 sqm. • Indoor • 250-400 Guests

Designed to resemble a grand drawing room. With its sophisticated decor and spacious layout, this stunning venue offers a timeless and romantic setting for your special day, creating an cherished experience for you and your guests.





## YEN NER RUN 1

90 sqm. • Indoor • 50-80 Guests



Adjacent to the ballroom, our naturally lit rooms provide a bright and inviting space, perfect for pre-wedding preparations or intimate gatherings



## FAHPRAPHA

222 sqm. • Indoor • 150-200 Guests



Our Authentic Thai cuisine restaurant offers a breathtaking view overlooking the remarkable Chao Phraya river, perfect for any an intimate wedding and after-party celebration.



## SUM RAN RATH 1

126 sqm. • Indoor • 50-100 Guests



Adjacent to the garden, our intimate room is perfect for small wedding gatherings, offering a cozy and elegant space for your closest family and friends to share in your joyous occasion.



## KUM PA NEE

217.5 sqm. • Indoor • 200-300 Guests

Featuring high ceilings and abundant natural daylight, this space is ideal for weddings, comfortably accommodating 150 to 200 guests. The tranquil garden view and bright ambiance create an enchanting atmosphere for your special day, ensuring an unforgettable experience for you and your loved ones.



## KUM MA JON

150 sqm. • Indoor • 50-100 Guests

This room offers a charming garden view, providing an intimate and tranquil setting for your event. Ideal for morning wedding ceremonies with up to 50 guests, it creates a warm and welcoming atmosphere. This space is also perfect for after-wedding parties, where you can celebrate with close friends and family in a picturesque environment.



## SARANROM GARDEN

1,287 sqm. • Outdoor • 600 Guests



Surrounded by lush greenery and blooming flowers, our picturesque venue provides a romantic and serene setting for a wedding that will be truly unforgettable.



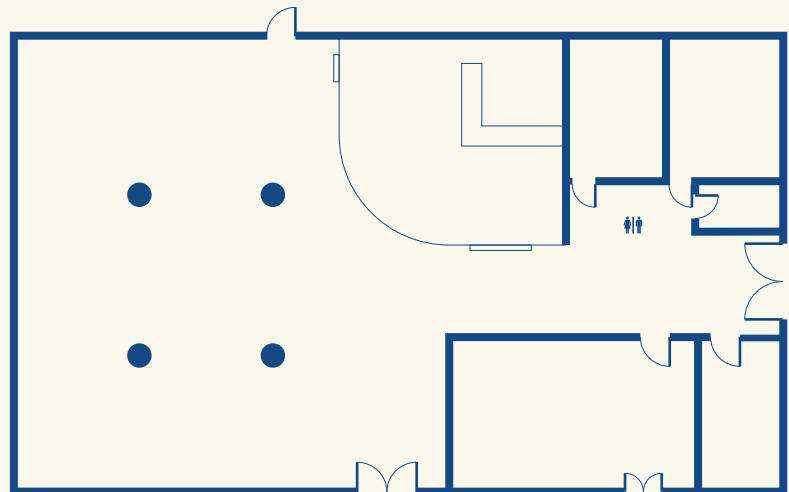
# FUNCTION ROOMS

FUNCTION ROOM	DIMENSION				BANQUET		
	AREA (SQ.M.)	DIMENSION (M.)	CEILING (SQ.M.)	STAGE (C.M.)	COCKTAIL	BUFFET	CHINESE/THAI SET
KUM PA NEE	217.5	14.5x15	4.5	350x1100x75	300	200	250
KUM MA JON	150	10x15	3.5	330x450x55	120	90	90
YEN NER RUN	370	18.5x20	4.5	-	-	250	400
YEN NER RUN 1	90	6x16	3.4	-	60	80	80
SUMRANRATH 1	126	9x12	3.2	-	120	90	100
FAHPRAPHA	222	12x18.5	3.25	-	150	120	100
SARANROM GARDEN	1,287	33x39	-	510x930x35	600	400	600

## YEN NER RUN

Floorplan

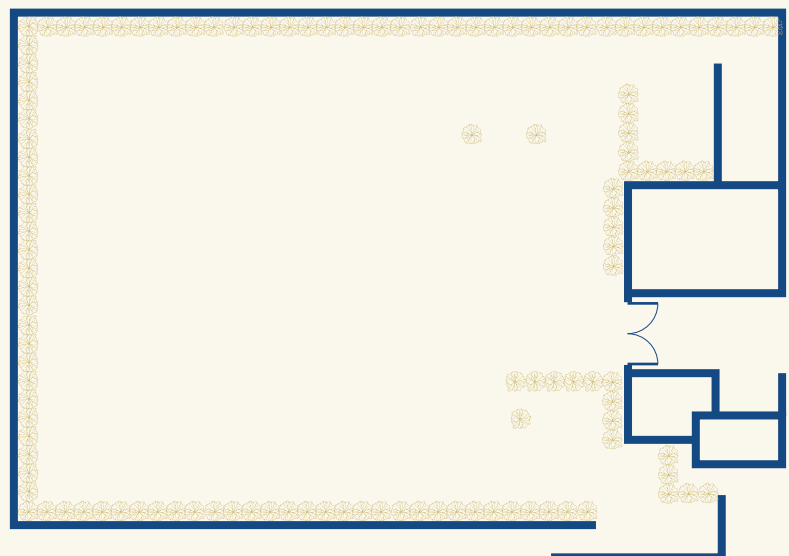
370 sqm.  
Indoor  
250-400 Guests



## SARANROM GARDEN

Floorplan

1,287 sqm.  
Outdoor  
600 Guests







PACKAGES



PRE-WEDDING  
PACKAGE



# PRE-WEDDING PACKAGE

Capture your pre-wedding moments in a serene, natural garden setting along the riverside. These sweet memories will be cherished forever. Our riverfront and garden wedding venue, with its stunning architectural essence, provides a breathtaking backdrop for your celebration, where your bespoke dreams come to life in a truly enchanting atmosphere.



## PACKAGE INCLUSIONS:

- Day-use of our common area from 06.00 a.m.-06.00 p.m.
- Changing room from 06.00 a.m.-06.00 p.m.
- 10 % discount on food & beverage on the shooting day at Fahrapha Restaurant
- One-time complimentary lunch set for two

# WEDDING PROPOSAL PACKAGE





# WEDDING PROPOSAL PACKAGE

Make your once-in-a-lifetime wedding proposal even more special at Kalanan Riverside Resort, where the serene backdrop of the Chao Phraya River witnesses your love. Our package is designed to make your special moment unforgettable, ensuring your journey together begins on the perfect note.



## PACKAGE INCLUSIONS:

- One night stay in Grand Deluxe River View inclusive of breakfast
- Romantic Set Dinner
- A bottle of sparkling wine to toast to your love
- Bouquet of flowers

A couple in traditional red Chinese wedding attire stands on a balcony. The woman is wearing a red qipao with intricate gold embroidery and a matching long skirt. The man is wearing a red jacket with gold embroidery and a grey patterned sarong. They are both smiling and looking towards the camera. The balcony has a white railing with a green handrail. In the background, there is a white building with a green tiled roof and some greenery. The text "ENGAGEMENT CEREMONY" is overlaid in white capital letters in the center of the image.

ENGAGEMENT  
CEREMONY



# ENGAGEMENT & CHINESE CEREMONY

## ENGAGEMENT CEREMONY

- Set up stage with sofa set
- A pair of flower stand on stage
- A flower 9 tray for engagement (Kan Mark Aek)
- A bridal bouquet
- 4 Floral corsages
- Coffee break for 30 persons (Coffee and tea with snacks)
- Personalized logo on stage

## TEA CEREMONY

- Chinese tea set

## ADDITIONAL SERVICES

- THB 2,500 net for 10 seats of Kanom EE (Chinese Sweet Dumpling)



A photograph of a man and a woman in traditional Thai wedding attire. The man, on the left, is wearing a white long-sleeved shirt, glasses, and a gold sash. He is looking towards the woman. The woman, on the right, is wearing a white and gold patterned shawl over a dark green patterned dress, with gold jewelry including a necklace, earrings, and bracelets. She is smiling and looking back at the man. The background is a blurred outdoor setting.

THAI  
WEDDING  
CEREMONY





# ENGAGEMENT CEREMONY

## PACKAGE INCLUSIONS:

- Ceremony stage with sofa set
- A pair of flower stand on stage
- A flower 9 tray for engagement (Kan Mark Aek)
- A bridal bouquet
- 4 Floral corsages
- Coffee break for 30 persons (Coffee and tea with snacks)
- Personalized logo on stage





# THAI WATER POURING CEREMONY

## PACKAGE INCLUSIONS:

- Ceremony stage with Buddhist altar
- Thai water pouring ceremony set
- A pair of wedding garlands
- A pair of flower trays for blessed water
- Ceremonial headdress and powder



# BUDHIST CEREMONY

## PACKAGE INCLUSIONS:

- Ceremony stage for ceremony with Buddhist altar
- Buddha altar set with flower
- Seating arrangement for 9 monks
- 9 sets of flowers and incense sticks
- 9 sets of offering (Sang-Ka-Tan)
- Envelopes with supplies for 9 monks and 1 deacon leading prayers
- Meal offering for 9 monks



A man in a black tuxedo with a white shirt and black bow tie is walking arm-in-arm with a woman in a long, white, long-sleeved, floor-length gown. They are walking on a dark surface, possibly a red carpet, at night. The background is dark with many out-of-focus lights, creating a bokeh effect. The text 'WESTERN CEREMONY PACKAGE' is overlaid in the center of the image.

WESTERN  
CEREMONY  
PACKAGE



# WESTERN CEREMONY PACKAGE

## PACKAGE INCLUSIONS:

- Flower archway
- 6 Flowers stands along the aisle
- A bridal bouquet
- 4 Floral corsages
- 2 Petals baskets
- Rose petals for throwing
- Coffee break for 30 persons (Coffee and tea with snacks)





# WEDDING PARTY PACKAGE

Celebrate your love in style with our exclusive wedding party package, creating an unforgettable experience for you and your guests. Whether it's an intimate gathering or a grand celebration, every detail is perfectly arranged.



# WEDDING AFTER PARTY PACKAGE

Celebrate the joyous moments that follow your special day with our Wedding After Party Package, offering an unforgettable experience filled with laughter, music, and delightful treats.






## PACKAGE INCLUSIONS:

- Private function room
- Standard decoration and sound system
- 2-hour free flow soft drink
- Free corkage charge



For more information,  
please call +66(2) 584 2222  
or email: [enquiry@kalananriverside.com](mailto:enquiry@kalananriverside.com)

 [kalananriverside](#)  
 [kalananriverside](#)  
 [@kalananriverside](#)

KALANAN RIVERSIDE RESORT  
17/56 Moo 7, Sukhprachasan Road, T. Bangpood,  
Pak Kret, Nonthaburi 11120, Thailand

---